

General guidelines

All you need to know before your arrival to prepare for your stay. Day-to-day rules and regulations of your residency program. Overall facilities and possibilities.

Our residency program is designed to provide the ideal environment for artistic creation while in direct contact with a natural setting. Depending on your situation, we offer three different options:

1. Residency for an individual artist.
2. Collective (no more than 2 artists).
3. Artist +1*

* As an artist-run residency, we launch a pioneering work-life balance program for those who want to bring along one family member or partner to the residency.



Accommodation

We are able to provide a single room with a desk and workspace for one person, a double room for couples with a desk or two different rooms for collectives so the members don't need to share the bedroom space.



Kitchen / Food

The kitchen is located on the second floor of the house. You can cook your own meals and you will have your own space in the fridge. You can also use the kitchen supplies and equipment but must respect the shared space by keeping it clean and organized.

Sometimes residents share meals with the team, but It's not mandatory. Grotta is a friendly place, so we invite all the residents to attend a welcome dinner/farewell party organized by the staff.

There are several supermarkets and grocery stores in town. There is a local market where you can find fresh organic food.

Living room / Dining room

The dining and living room area is located as well on the second floor of the house. Residents must respect the shared space by keeping it clean and organized.



Common areas / patio / terrace

Residents are invited to enjoy the patio and the terrace. Common areas are open 24h. Some bedrooms have direct access to the patio. In order to respect the local inhabitants' need for a peaceful sleep, please keep silent after 23.00h.

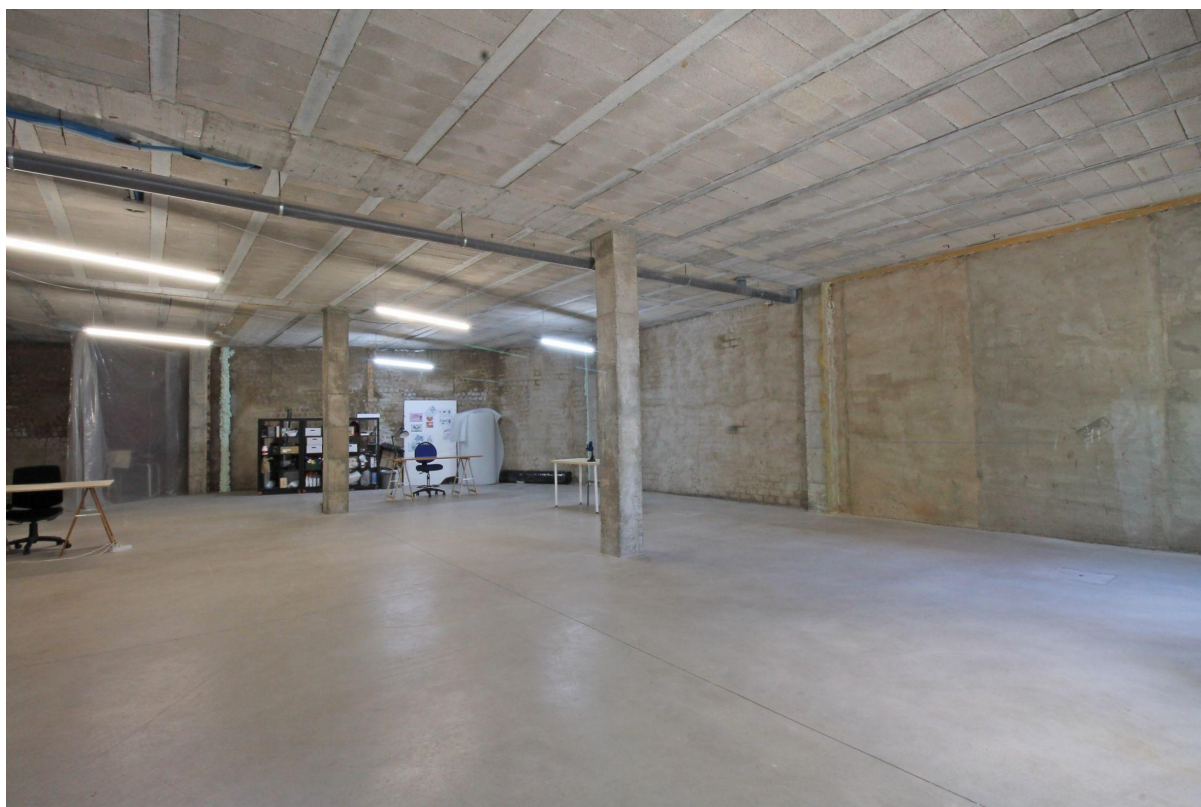
Bathroom

The residency provides toilet paper and soap at no additional cost. We provide extra towels. We provide washing machine for clothes. The water is heated.

Studio

Our 200 m2 studio is open 24/7, including a toilet and a little tea space. Grotta offers a broad range of materials available for the residents. You can check the [Grotta AIR Materials List](#) to know more about what we can offer you during your stay.

It is possible to work outside in the park as well, just 20m. away from the house. Artists are responsible for supplying their own materials.



Surroundings

Aracena is a typical Andalusian village, with whitewashed houses contrasting against the green landscape of the mountains. Its town centre, an official Property of Cultural Interest. The built heritage of Aracena is notable for its fortifications, including the castle and many churches and monasteries. There is also an interesting outdoor Museum of Contemporary Art.

Under the mountain you can find a hidden treasure: a natural cave where you can enter a world of fantasy. Gruta de las Maravillas (las Maravillas grotto) is one of the largest caves in Spain, and is amazingly beautiful inside. **Grotta AIR was built right next to the entrance of this wonderful cave.** The residency is placed in a perfect spot: a lively street during the morning with many restaurants around but very calm in the evening and **only 50 meters away from the forest.** You can hike to the castle or just choose one of the many hiking routes to go for a walk. Near the town you will find pasture, a river, a lake, and an unpolluted fauna and flora.

Expectations towards the artist

Grotta invites residents to present themselves and their work to the local community. The Residency also offers a possibility to teach a public workshop, to perform or make an exhibition during the residency. But none of the above is mandatory and we will discuss this matter with every artist personally.

Curatorial and technical advice

Grotta's aim is to support the development of ideas and the production of new work, by offering comfortable, self-catering, accommodation and workshop and study space for experimentation, development and creativity.

The team will be happy to help residents to find technical solutions as well as providing curatorial support and mentoring.



Fees & Support

The residency fee is intended to cover the general cost of running the programme and the maintenance of the space. We do not offer grants, stipends or other economical support. We are happy to assist artists seeking grants or other forms of funding in their home country/institution, by providing letters of recommendation when the candidature is accepted.

The residents' fee for 2 weeks is € 600, each next week € 250. For collectives and artist+1 programme the price for 2 weeks is € 750, each next week € 325. Is requested a deposit of €200 when the applicant receives acceptance of the candidature.

Terms & conditions during your stay

Smoking is strictly prohibited in all houses and common areas except the smoking areas. Any violation of this rule will automatically result in a fine of at least € 300 being charged to the card provided for the reservation. The patio and the terrace are conditioned for smokers.

Reservation and cancellation policy

In order to guarantee your participation in the Artistic Residencies Program of Grotta we request the payment of 200€ before your stay. This payment is a guarantee of participation in our Artistic Residencies Program. The remaining amount must be paid one month before your arrival. To cancel or change your Artistic Residency, please email us at grottaair@gmail.com. In case of cancellation, 100% of the reservation amount will be refunded for cancellations made up to 8 weeks before the date of entry, and 50% of the reservation amount for cancellations made up to 6 weeks before the date of entry. Changing the booking date is only possible up to 8 weeks before the check-in date. No date changes

or returns are made for cancellations made less than 10 days in advance or during the Artistic Residency. If the Artistic Residency Program is canceled by Grotta due to majeure reasons, 100% of the registration fee will be returned.

Security deposit

We ask all residents for a one-time refundable deposit. There are a lot of materials/equipment that can be broken or damaged around the house and in the Ateliers. The deposit must be paid upon arrival to the village and will be refunded before your departure if:

- no damages are verified in the accommodation and the atelier;
- Accommodation and Atelier's garbage and recycling bin have been collected and placed in their respective Eco point near the house;
- Every requested material is returned without damage or evident wear;
- Accommodation and Atelier's dishes and tools are washed;
- Accommodation and Atelier's keys are returned.

Check-in and check-out

Check-in from 3 pm.

Check-out until 12 am.

Questions? Proposals?

grottaair@gmail.com

+34617456782